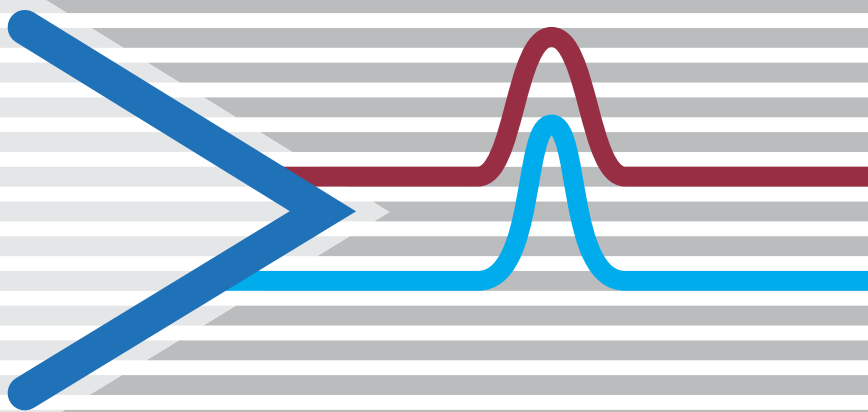


Antennas

PBA 320



PRECISION BICONICAL ANTENNA: PBA 320

Highly Accurate Reference Antenna for:

- ✓ semi anechoic room validation (CISPR 16, EN 50147-2, ANSI C63.4)
- ✓ fully anechoic room validation (CISPR 16, prEN 50147-3)
- ✓ broadband precision field-strength measurements



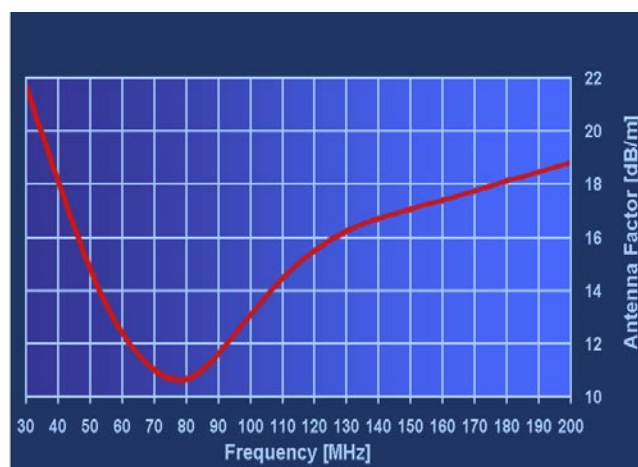
PBA 320 antenna pair for normalised site attenuation testing in a semi anechoic chamber

AVAILABLE OPTIONS FOR PBA 320

- ✓ Accredited individual free space calibration according to ANSI C63.5 or SAE ARP 958
- ✓ Accredited calibration for site validation measurements (Dual Antenna Factor, Site Reference)
- ✓ Ferrite beaded cable in different lengths

TECHNICAL DATA PBA 320

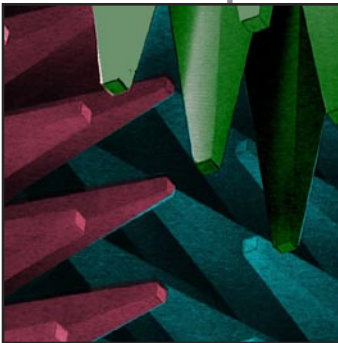
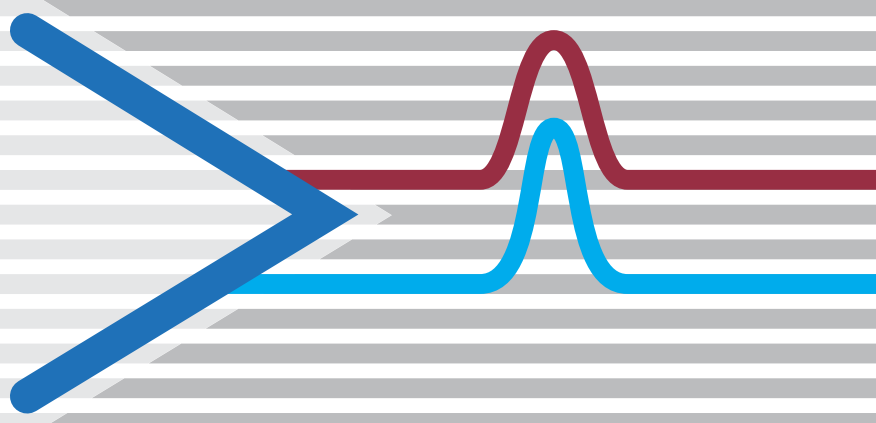
- ✓ frequency range: 30 MHz - 200 MHz
- ✓ max. input power: 20 dBm
- ✓ antenna symmetry: better than ± 0.2 dB
- ✓ antenna width: 126 cm
- ✓ support length: 20cm
- ✓ connector type: N female



Typical antenna factor for PBA 320 antenna

Antennas

PBA 320



Presented by:

Contact

ARC Seibersdorf research GmbH
Information Technologies - Radio Frequency Engineering
A-2444 Seibersdorf
E-mail: itr@arcs.ac.at, Web: <http://itr.arcs.ac.at>
Reinhard Zeitlhuber
Phone: +43 (0) 50550 - 2842, Fax: - 2813