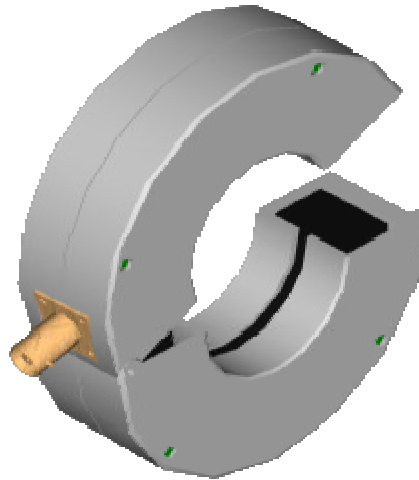


Current Probe

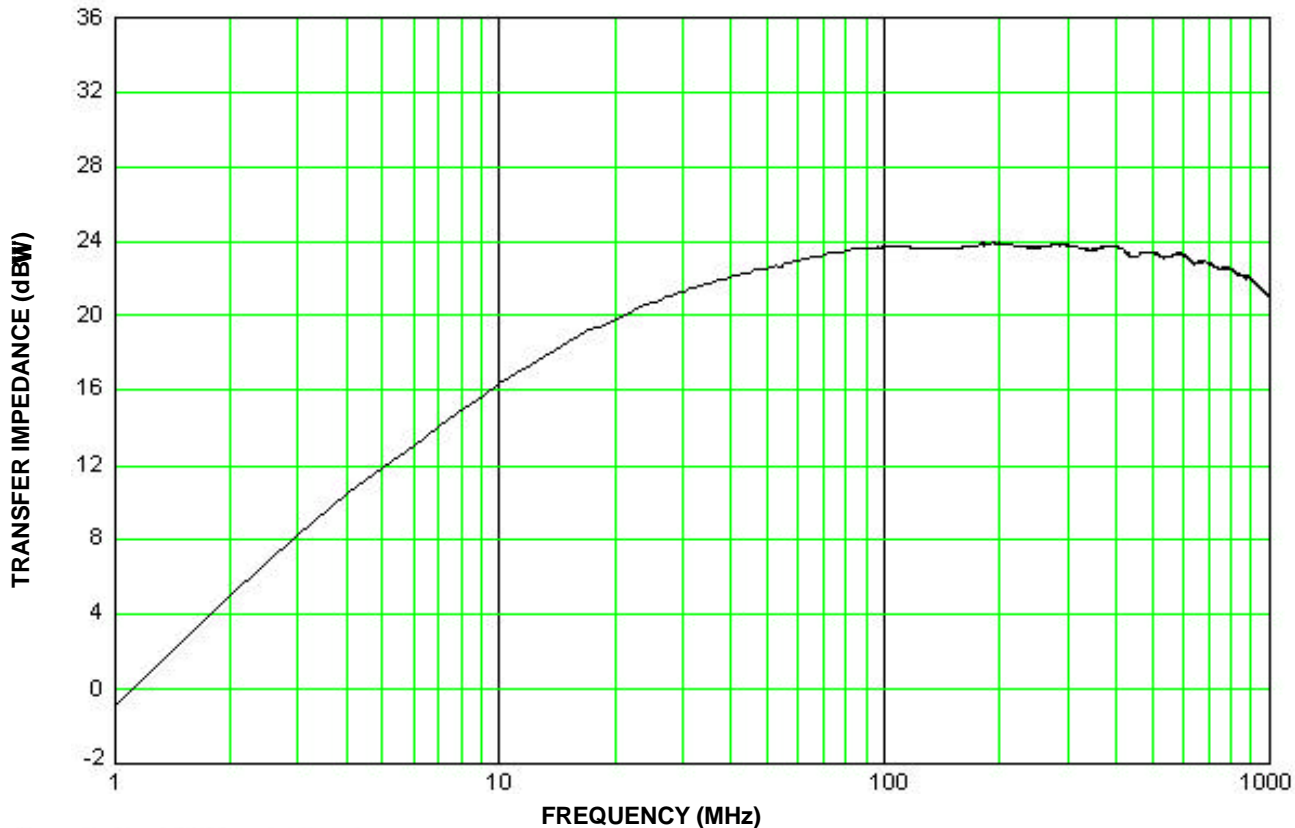
F-61 Specifications

Frequency:	1 MHz – 1 GHz
Internal Diameter:	32 mm
External Diameter:	71 mm
Height:	19mm
Z_0^1 :	16
$\text{dB}\Omega^2$:	24
Connector ³ :	Type-N
DC-60Hz:	200 amperes
400MHz:	200 amperes
RF(CW):	20 ampere
Pulse ² :	50 amperes



1. Probe calibrated with $50\Omega \pm j0\Omega$ Load Impedance
2. Depends upon the pulse width and pulse repetition rate
3. SMA connector available upon request.

The F-61 is for laboratory and field testing. This probe has a small outer diameter, approximately 71mm with an internal diameter of 32 mm. The F-61 has a typical transfer impedance of 24 $\text{dB}\Omega$ (± 2 dB) over the frequency range of 70 MHz to 1 GHz. The RF current range is 20 amperes CW and 200 amperes peak with a duty cycle of 0.1. The maximum primary power line current is 200 amperes from DC - 400Hz. The “-L” version of this probe is calibrated to 20 Hz.



Fischer Custom Communications, Inc.

20603 Earl St. , Torrance, CA 90503 Phone: (310) 303-3300 • Fax (310) 371-6268

E-mail: Sales@Fischercc.com • www.fischercc.com

©2002 Fischer Custom Communications, Inc.

0208DS-F-61

All rights reserved • Printed in USA

F - 6 1