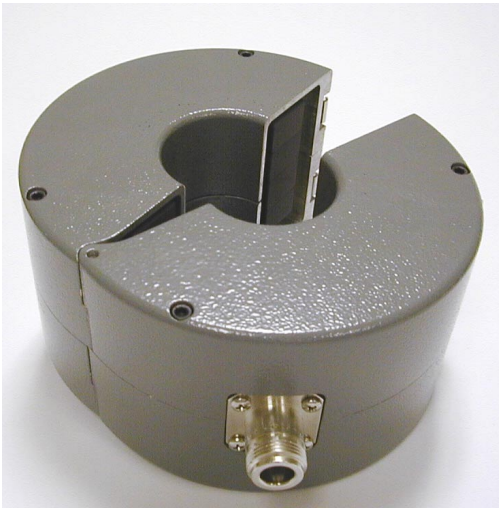
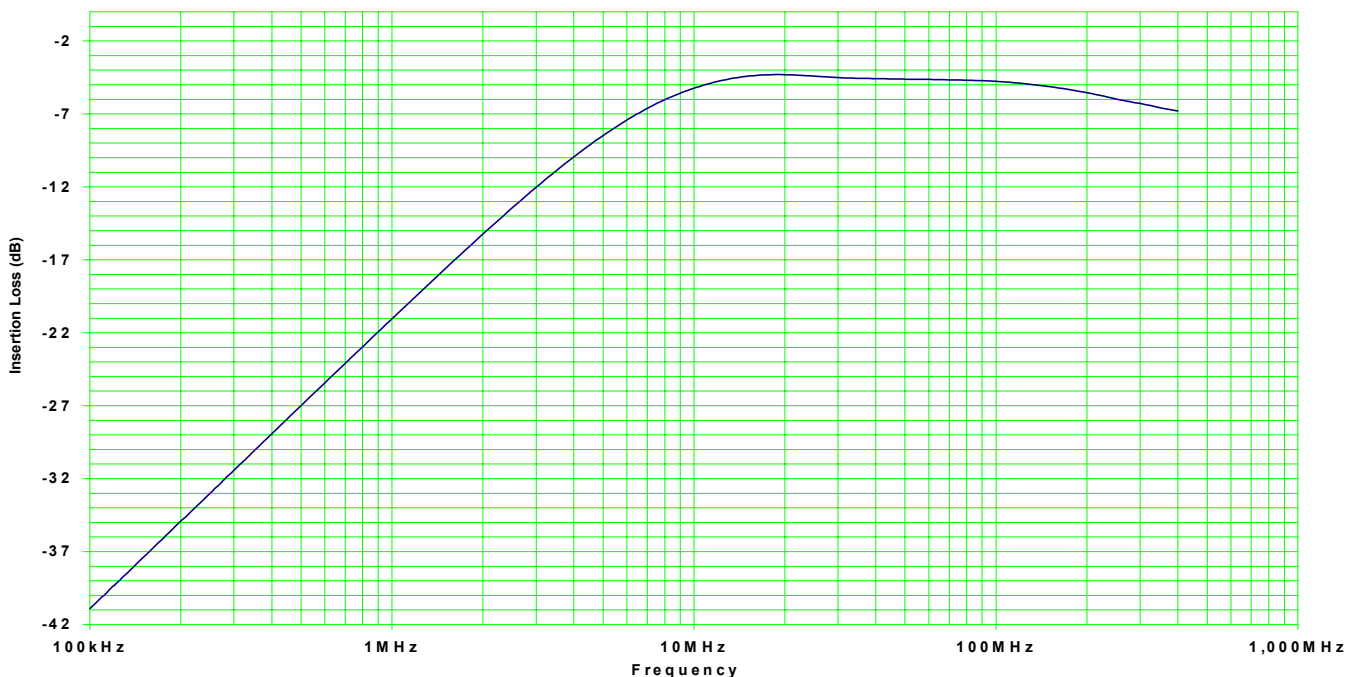


Bulk Current Injection Probe



The F-130-1 is used to couple large RF current from 100 kHz – 400 MHz into signal and power circuits to meet the requirements of testing in accord with DO-160, Section 20 and Mil-Std. 461/462. The useable frequency range is 100 kHz to 500 MHz with a typical insertion loss of 7 dB or less from 6 MHz to 400 MHz. The CW input power rating is 200 watts for a duration of 30 minutes.



F-130-1 Specifications

Frequency: 1 MHz – 400 MHz
Inner Diameter: 40mm
Outer diameter: 127mm
Height: 70mm
Input Power rating: 200 watts

Accessories

FCC-BCICF-1 • Calibration Fixture
Bandwidth: 10 kHz – 400 MHz
F-52-40mm • Current Probe
Bandwidth: 10 kHz – 400 MHz



Fischer Custom Communications, Inc.

20603 Earl St., Torrance, CA 90503 · Phone: 310-303-3300 Fax 310-371-6268 · email: Sales@fischercc.com

© Fischer Custom Communications, Inc.

All rights reserved • Printed in USA

0208DS-F-130-1

F - 130 - 1